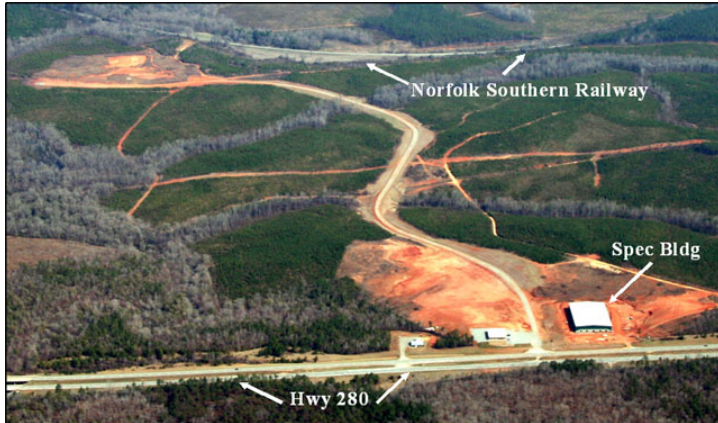


Site Profile

Alabama Site Selection Database

William T. Thweatt IP

City: Dadeville County: Tallapoosa
 Micropolitan Area: Alexander City



General Site Data	
Total Acres	602
Available Acres	602
Additional Available	No
Largest Tract	602
Smallest Tract	5
Fire Rating	5
Protective Covenants	Yes
Phase 1 Environmental	Yes
Soils Data Available	Yes
Topography	Slight Rolling
Zoning	Light Industrial
Previous Use	Forest
Previous Use Description	

Site Id: 4090	
Street Address	Hwy 280
Nearest City	Dadeville
Within City Limits	Yes
Zip Code	36853
Latitude	32.8297
Longitude	-85.7271
Located in Industrial Park	Yes
Park Name	William T. Thweatt Industrial Park
Within Enterprise Zone	Yes
Within Favored Geographic Area	No
Within Renewal Community	No

Transportation	
Rail Service	
Provider:	Norfolk Southern
Track Status:	Adjacent Track
Provider #2:	
Track Status:	
Navigable Waterway	
Dock Facility:	Not Specified
Nearest Commercial Air City	
	Montgomery, AL
Miles to Nearest Service:	66

Highways			
Highway Type	Highway Name	Miles to Access	Four Lane
Interstate	I-20	80.0	
Interstate	I-65	58.0	
Interstate	I-85	20.0	
Federal Highway	280	0.0	Yes
Alabama Highway	49	2.0	No

Price	
Sale Price	\$20,000.00 per acre

Land Lease Rate (Annual)	
Negotiable?	Yes
Date Quoted	Aug 17, 2007
Price Comments	

General Comments
 This industrial park is currently under development by the City of Dadeville and Tallapoosa County. Utilities are in place at the entrance to the park. Currently working with telecommunications provider.

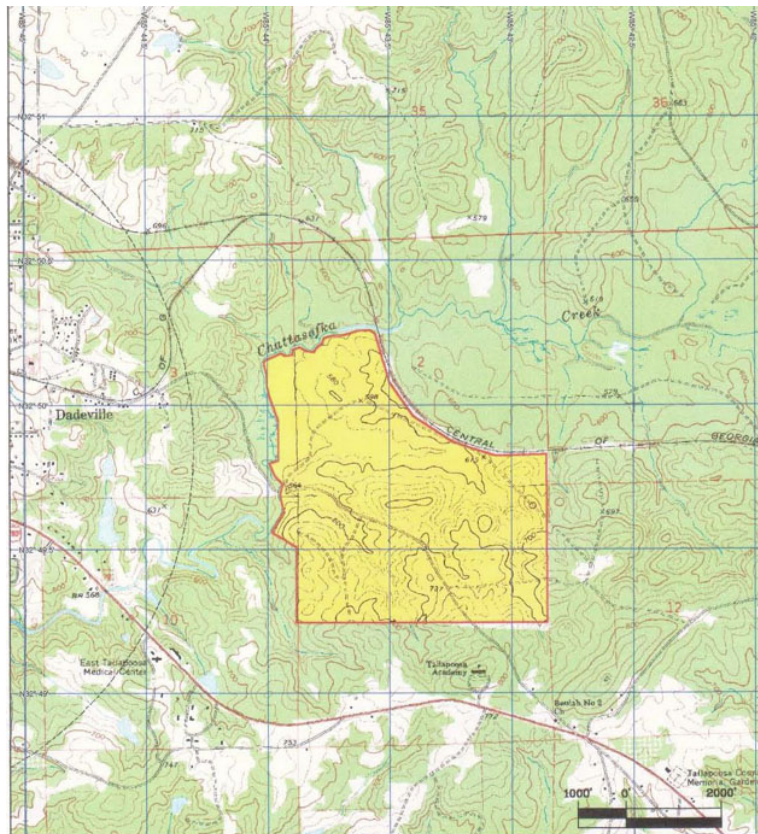
Site information is current as of 8/17/07

Site Profile

Alabama Site Selection Database

William T. Thweatt IP

City: Dadeville County: Tallapoosa
Micropolitan Area: Alexander City



Site Profile

Alabama Site Selection Database

William T. Thweatt IP

City: Dadeville County: Tallapoosa
Micropolitan Area: Alexander City

